

SANPETE MESSENGER

Caring about YOUR town...Caring about YOU!

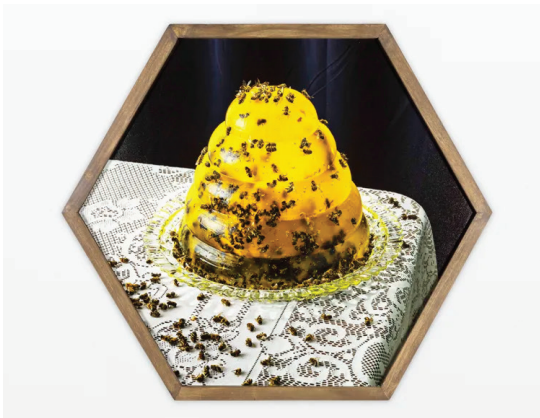
Home > Lifestyle

Granary Arts exhibition draws from Utah's culture

by Sanpete Messenger — 09/29/2021 Reading Time: 3 mins read

EPHRAIM—Granary Arts is pleased to present two new exhibitions from artists that have explored Utah's natural wonders and cultural symbols.

There will be an opening reception Friday, Oct. 8 from 6-8 p.m. at Granary arts to introduce the new exhibits.



Granary arts will be hosting a new collaboration called the *New Beehive* in October. This piece from Daniel George is called *Industry*.

The first one is a collaboration called *The New Beehive* that explores the beehive symbol in various aspects of Utah's culture. The second exhibit called *Over Look/Under Foot* by Katie Hargrave and Meredith Laura Lynn are representations of Utah's five national parks.

The New Beehive is presented by the Utah Division of Arts and Museums and it brings together the work of 30 Utah-based artists who exemplify a diversity of artistic expression.

According to Bryn Burningham, Granary Arts manager, the artists were invited to create a unique artwork employing the beehive and associated imagery as a concept, motif or metaphor. The resulting pieces are a collection of deeply personal interpretations of what it means to be a resident of the Beehive State in the 21st century.

In the exhibit *Over Look/Under Foot*, Hargrave and Lynn explore all five Utah National Parks and consider the complexities of a relationship to landscape that is heavily mediated by vehicles,

cameras, and our own nostalgia, Burningham said.

In the spring of 2020, the two artists visited every national park in Utah and created a body of work exploring how these sites have been impacted by infrastructure of roads, parking lots, scenic overlooks and bathrooms.

Hargrave and Lynn are artists and educators who work collaboratively to explore the historic, cultural and environmental impacts of public land. Their work has been shown all over the nation. They met at the University of Iowa, where they both earned MFAs. To see more, visit www.meredithlauralynn.com; www.katiehargrave.com.



Katie Hargrave and Meredith Laura Lynn will be presenting works like this one called Arches (Devil's Garden) at a new exhibition at Granary Arts.

Continuing exhibitions at Granary Arts include *Our Valley Speaks*, a virtual exhibition curated by David Lindsay; and in the CCA Christensen Cabin, *Bird's Eye Chisel Album*, by Ashley Hanson and Brian Laidlaw of The Family Trade and *Tintypes* by Holly Hooper.

These exhibitions can be viewed at Granary Arts, 86 N. Main St. in Ephraim, during regular hours, Wed – Sat, from 11 – 5 p.m. Granary Arts is funded primarily by Ephraim City and supported in part by the Utah Arts and Museums and the National Endowment of the Arts.

In addition to art shows, Granary Arts offers classes on art and provides free family workshops on drawing, painting and other arts. They switch up exhibitions several times a year. For more information, go to <http://www.granaryarts.org>.

Tags: Ephraim

Previous Post

Not exceptional in the history books, but exceptional as pioneer and community leader

Next Post

Scouts hold fundraiser at TIFIE Scout Camp

Sanpete Messenger